

Technical data sheet

BEKINA® Agrilite / Steplite / Steplite Food

CONFIDENTIAL



BEKINA

Size range	
● EU	35 - 48
● UK	3 - 13
● US	3½ - 15
Weight / pair (42)	
● non-safety	+/- 1.420 g +/- 3.13 lbs
● steel toecap	+/- 1.620 g +/- 3.57 lbs
● steel toecap & midsole	+/- 1.760 g +/- 3.88 lbs

LEG

A. Dimensions			
● height	outer measure: 38 cm 14.96 inches		
	cutting edge: 31 cm 12.20 inches		
● foot length	outer measure: 30 cm 11.81 inches		
	inner measure: 28 cm 11.02 inches		
B. Thickness			
● upper edge	2,85 - 3,20 mm 0.112 - 0.126 inches		
● calf	2,90 - 3,10 mm 0.114 - 0.122 inches		
● shin-bone	2,80 - 2,90 mm 0.110 - 0.114 inches		
● ankle	3,50 - 3,90 mm 0.138 - 0.153 inches		
● heel	3,90 - 5,00 mm 0.153 - 0.197 inches		
● toe	3,70 - 5,00 mm 0.146 - 0.197 inches		
C. Raw material			
polyurethane			
D. Specific weight			
0,65 - 0,7			
E. Colour			
green / black / white / blue			
F. Tensile strength			
(incl. lining)	839 N/cm² 8.39 MPa		
G. Elongation			
(incl. lining)	1145% +/- 20%		
H. Hardness			
42° - 47° Shore A			
I. Tear strength			
11,1 N/mm			
J. Aging			
	7 days at 70°C 158 °F	14 days at 70°C 158 °F	21 days at 70°C 158 °F
● tensile strength	721 N/cm² 7.21 MPa	963 N/cm² 9.63 MPa	804 N/cm² 8.04
● elongation	1251% +/- 20%	1489,2% +/- 20%	1349% +/- 20%
● tear strength	10,5 N/mm	10,3 N/mm	10,7 N/mm

Technical data sheet

BEKINA® Agrilite / Steplite / Steplite Food

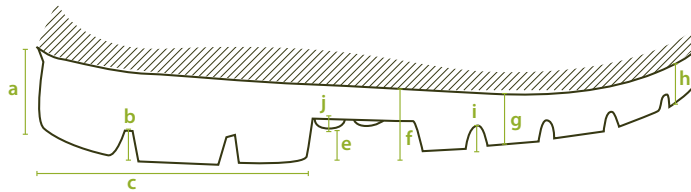
CONFIDENTIAL



K. Chemical resistance	
	see detailed list
L. Environmental temperature	
• maximum	+/- 100°C
• minimum	Cl -20°C/-4°F (=thermo-insulating)

LINING

A. Material	
	PU coating on tricot
B. Seams	
	in front & middle of sole
	knitted or welded seams



X SOLE PROFILE

A. Dimensions	
• Heel	
• Thickness	(a) 32 mm 1.26 inches
• Profile depth	(b) 8,6 mm 0.34 inches
• Length	(c) 90,3 mm 3.55 inches
• Width	79,9 mm 3.14 inches
• Middle foot	
• Height	(e) 12 mm 0.47 inches
• Ladder anti-slip grips	(j) 2 mm 0.08 inches
• Sole	
• Thickness	(f) 23,3 mm 0.92 inches
	(g) 20,0 mm 0.79 inches
	(h) 17,9 mm 0.70 inches
• Profile depth	(i) 4,7 mm 0.18 inches
B. Raw material	
	polyurethane
C. Specific weight	
	0,55 - 0,60
D. Color	
	black / blue
E. Mechanical characters	
	see leg (f) - (j)

Technical data sheet

BEKINA® Agrilite / Steplite / Steplite Food

CONFIDENTIAL



F. Energy - absorption of the heel		
	30 - 35 (required \geq 20)	
G. Antistatic		
	dry: $2,2 \times 10^8$ Ohm	
	wet: $3,7 \times 10^7$ Ohm	
H. Abrasion mm³		
	35	
I. Hardness		
	62,5° +/- 2,5° Shore A	
J. Slip resistance of sole		
	SRC	
K. Chemical resistance		
	See enclosed list	
● Insole		
• Bottom	Micro cellulaire latex	
Thickness	1,7 mm 0.066 inches	
Shape	Raster (non-skid effect)	
• Upper	Felt	
Thickness	5 mm 0.197 inches	
● Steel toecap & sole		
	Required	Result
• Penetration resistance of sole	1,1 KN	1,430 KN
• Impact resistance on steel toecap (EN 12568 - load 200N)	14 mm 0.551 inches	17 mm 0.669 inches
• Compression resistance of steel toecap	14 mm 0.551 inches	25,0 mm 0.984 inches
• Width of steel toecap	87,3 mm 3.437 inches	
• Height of steel toecap	44,2 mm 1.740 inches	

DESIGN ASPECTS

● Lines on the boots	Modern design
● Sole	Few rolling to ensure all-over grip
● Sole profile	Ladder anti-slip on intermediate foot (cambrure)
● Labeling	Through heat-transfer, ensures label remains stuck
	4-colour printing possible as of 2.000 pairs
● Packaging	
• Quality label	Yes
• Packaging	4-coloured pairbox or plastic bag
• Quantity per carton	5 pairs of the same size